

- Wet mating  
Metal-less structure for superior corrosion resistance and durability
- Immunity against cathodic delamination & galvanic corrosion
- Lightweight design lowers deployment costs
- Zero magnetic signature

**Amphenol LTW**

# XIENTO SERIES

**Ruggedized connectivity  
for shallow water  
immersion**



**Unrivalled InterConnects for Harsh Environments**

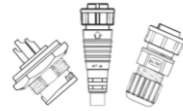
# About ALTW

**3**

**Production Sites**  
(Taiwan, China, Mexico)

**30+**

**Market Applications**

**90,000+**

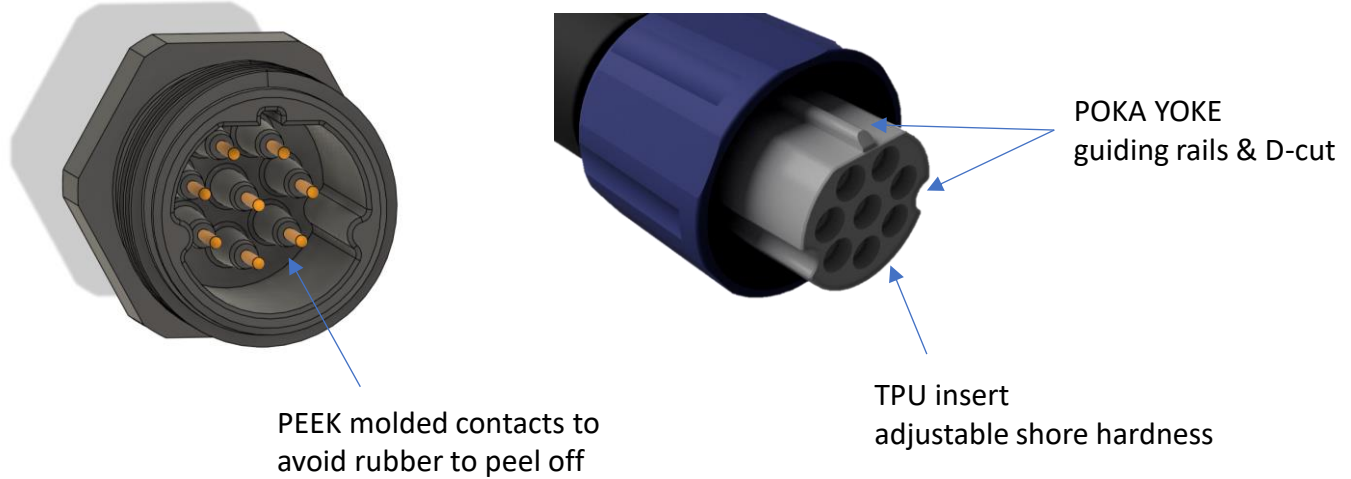
**Products**

Since 1993, Amphenol LTW Technology “ALTW” lives and breathes to create, innovate, design and produce “***unrivaled interconnects for harsh environments***”. With over 300 worldwide patents, not only does ALTW offer the broadest and widest range of rugged interconnects in the industry but also customization with the mission of “Customer Satisfaction First”. Undoubtedly, ALTW is the leader in rugged interconnects, highly recognized for its uncompromising quality, short lead time, fast and tailored service and its very competitive pricing.

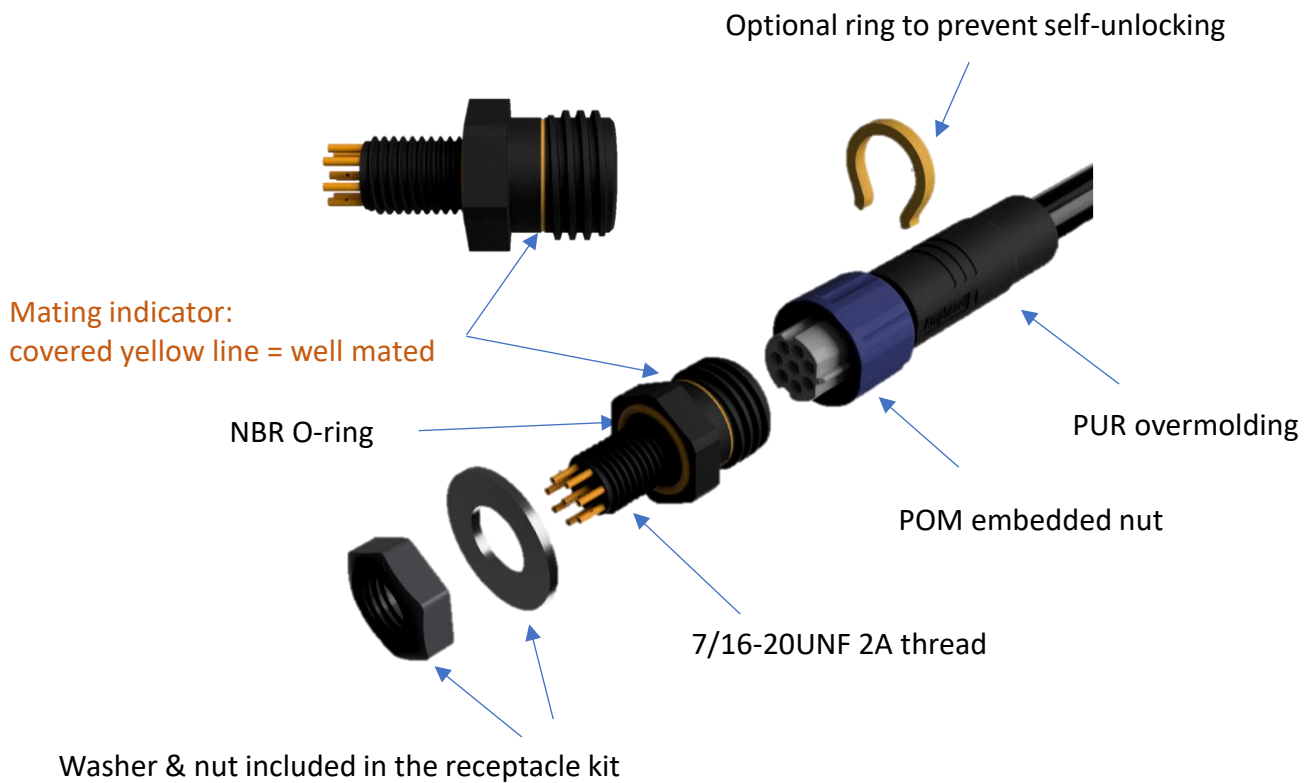
Regardless of the challenging environments that your products will be subject to; there is a very good chance that you will find what you are looking for with ALTW.

***Unrivaled InterConnects for Harsh Environments***

# XIENTO Series



## Product exploded view

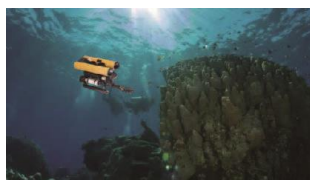


# Specifications and Applications

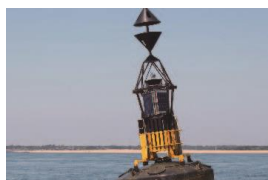
General Characteristics	
No. of contacts	8pin
Durability	500 cycles
Operating voltage	30V
Nominal current	2A
Contact resistance	10 milliohm
Insulation resistance	> 200 MΩ
High data transmission up to	Cat.5e (up to 40m)
Vibration resistance	NA
Mating style	Screw locking
Termination	Solder
Locking sleeve threads	Tr18*2.0
Bulkhead connector threads	7/16"-20UNF
Wet/splash mating endurance	Dry Mating (wet mating to achieve)

Environmental specifications	
Ingress protection	Tested 50 bars = 725 PSI, immersion down to 300m permanently
Temperature rating (water)	-4°C ~ +60°C
Temperature rating (air)	-40°C ~ +60°C
Storage temperature rating	-40°C ~ +60°C

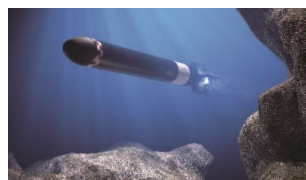
Material	
Bulkhead	PEEK, Nature
Connector housing	PU
Insulator/Insert	PU
Contact plated	Gold
Overmolding	TPU
Cable outer sheath / jacket	TPU
O-Rings	NBR
Locking sleeves	POM
Washer	SUS316



Underwater Equipment



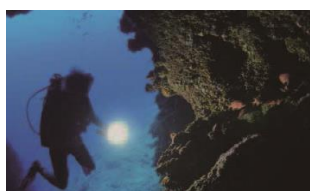
Buoys



Underwater Vehicles



Wave Power Generation



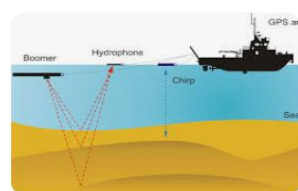
Diving



ROVs



Aquaculture



Geophysical





# Amphenol LTW

## Contact Us

Luc Kan | Sales & Marketing | [luc@ltw-tech.com](mailto:luc@ltw-tech.com)

Customer Service | [sales@ltw-tech.com](mailto:sales@ltw-tech.com)

## Follow Us



*Unrivaled InterConnects for Harsh Environments*