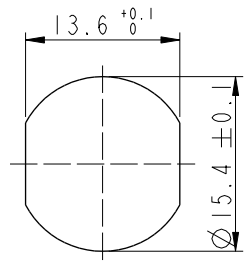
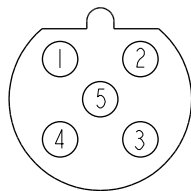
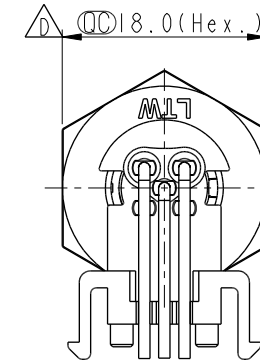
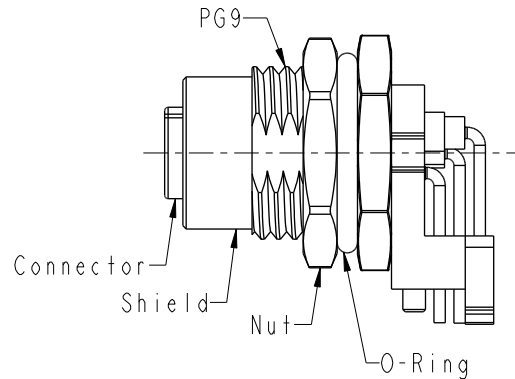
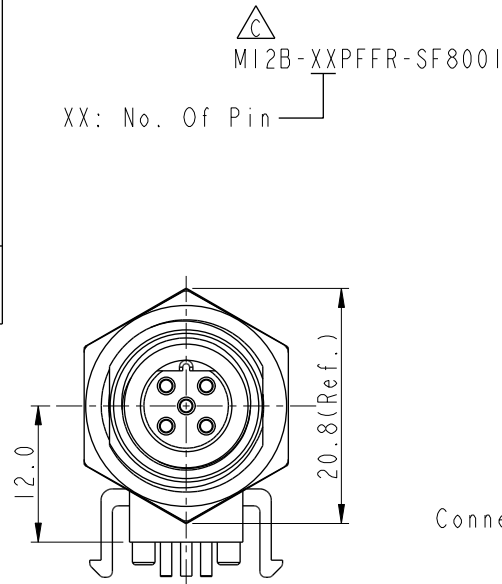


REV.	ECN NO.	DATE	SIGN	DESCRIPTION
D	C210309	2021/02/26	Ruru	 X4
E	C221973	2022/12/22	Ruru	 X1
F	C231034	2023/08/08	Ruru	 X1

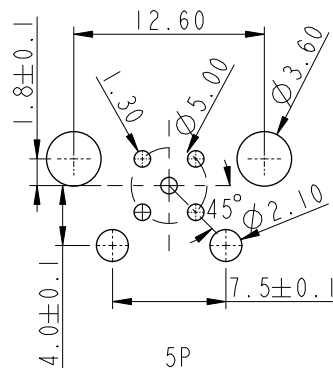


Recommended  
Panel Cut-Out



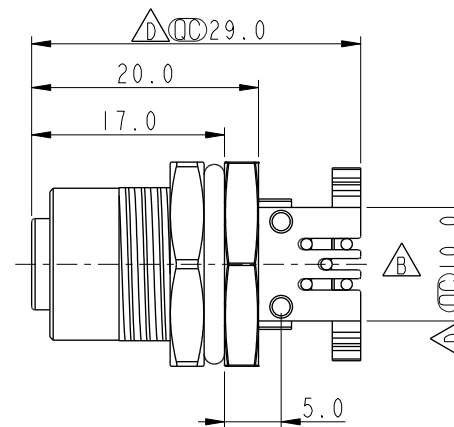
5P

### Pin Assignment Front View






5P

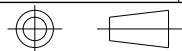
## PCB Layout



 Note:

- \* RoHS Compliant
- \*  Important dimension
- \*  Waterproof rate: IP68, unmated 1m/24h
- \*  IP69K, mated
- \* Connector
  - Housing: Thermoplastic, Black
  - Pin: Copper alloy, Gold plated
  - O-Ring: Rubber, Gray
- \* Shield: Metal
- \* Nut: Metal
- \* O-Ring: Rubber, Black
- \* For panel thickness max: 4.5mm
- \* For pcb thickness max: 1.6mm
- \* Nut is packed separately in pe bag

UNIT:mm




TOLERANCE	
.X	±0.25
.XX	±0.1
.XXX	±0.05
ANGLES	±1°

TITLE  
N SEN, M12 B, SCREW  
RECEPTACLE, F, F, PCB R 

SCALE 3:2	SIZE A4	SHEET 1 OF 1
REV. F	WC-REV. A.1	QC: Inspection item

**Amphenol LTW**  
安費諾亮泰企業股份有限公司

ITEM NO	DRAWN BY	DATE
	Nan_Su	2019-08-14
DWG. NO	CHECKED BY	DATE
 MI2B-XXPFFR-SF800I	Feng_Li	2019-08-14
CUSTOMER	APPROVED BY	DATE
ALTW	Jerry	2019-08-14