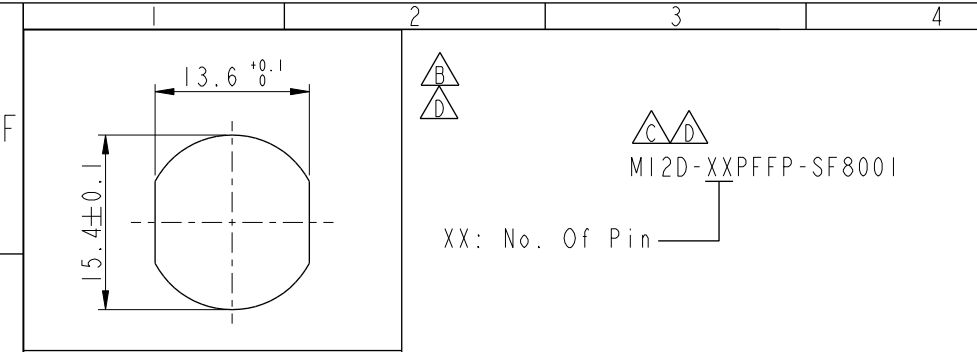


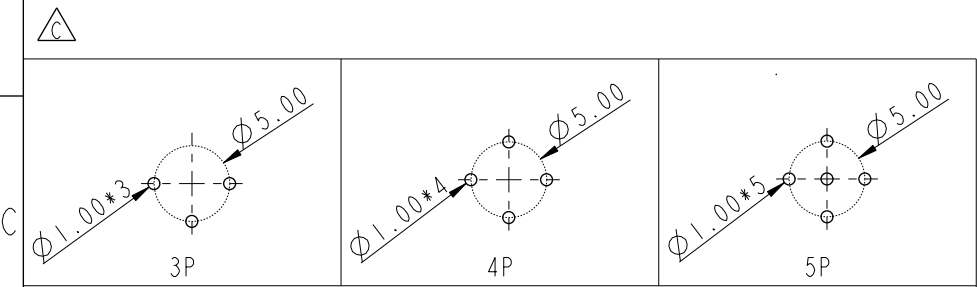
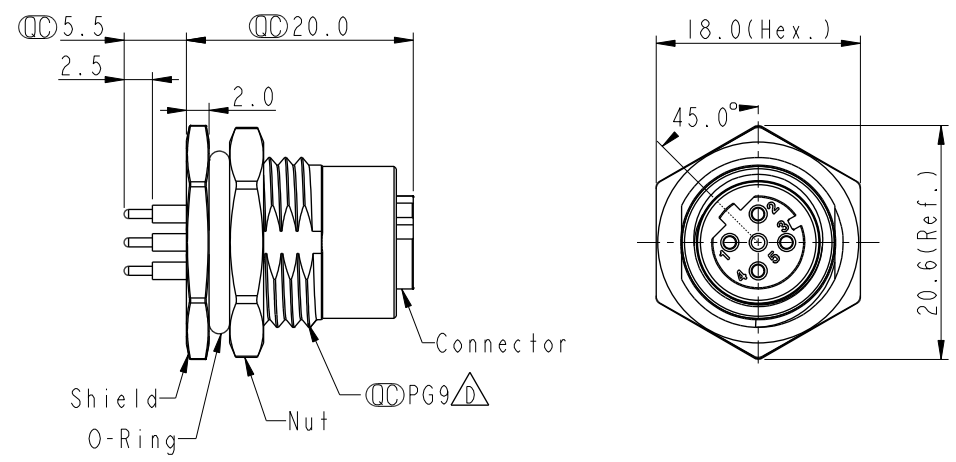
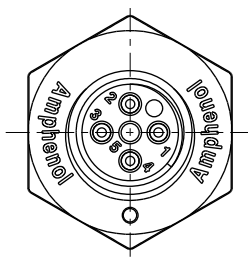
THIS DOCUMENT IS SUBJECT TO CHANGE WITHOUT NOTICE. IT IS CONFIDENTIAL AND A PROPERTY OF Amphenol LTW. DISCLOSURE TO THIRD PARTY HAS TO BE AUTHORIZED BY Amphenol LTW.

REV.	ECN NO.	DATE	SIGN	DESCRIPTION
E	C210309	2021/02/26	Ruru	X2
F	C221973	2022/12/22	Ruru	X1
G	C231034	2023/08/09	Ruru	X1

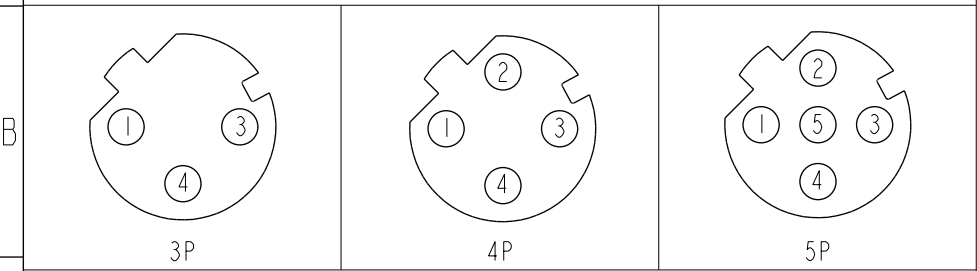


Recommended Panel Cut-Out

MI2D-XXPFFP-SF8001
 XX: No. Of Pin



PCB Layout



Pin Assignment Front View

- Note:
- * RoHS Compliant
 - * (M) Important dimension
 - * (F/C) Waterproof rate: IP68, unmated 1m/24h
 (G) IP69K, mated
 - * Connector
 Housing: Thermoplastic, Black
 Pin: Copper alloy, Gold plated
 O-Ring: Rubber, Green
 - * Shield: Metal
 - * Nut: Metal
 - * O-Ring: Rubber, Black
 - * For panel thickness max: 4.5mm
 - * Nut is packed separately in pe bag

UNIT: mm		TITLE N SEN, M12 D, SCREW RECEPTACLE, F, F, PCB S
TOLERANCE .X ±0.25 .XX ±0.1 .XXX ±0.05 ANGLES ±1°	SCALE 3:2	SIZE A4
	REV. G	SHEET 1 OF 1
	WC-REV. A.5	(M): Inspection item

Amphenol LTW
 安費諾亮泰企業股份有限公司

ITEM NO	DRAWN BY Yulong_wang	DATE 2016-08-24
DWG NO (M) MI2D-XXPFFP-SF8001	CHECKED BY Cary	DATE 2016-08-24
CUSTOMER ALTW	APPROVED BY Jerry	DATE 2016-08-24