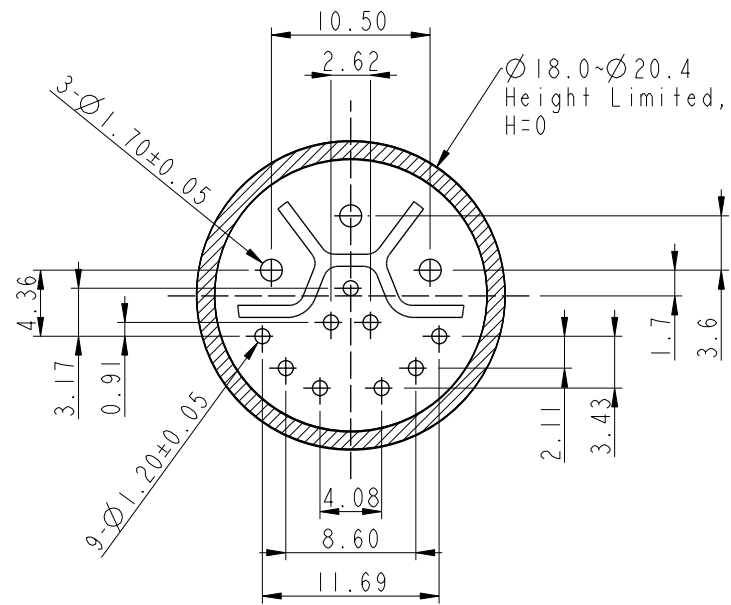
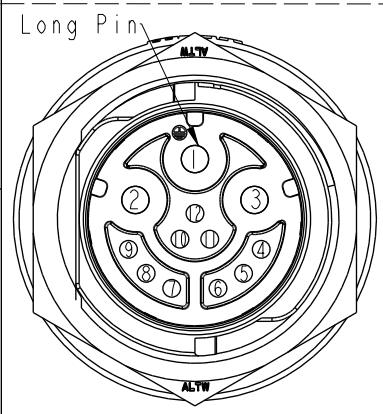
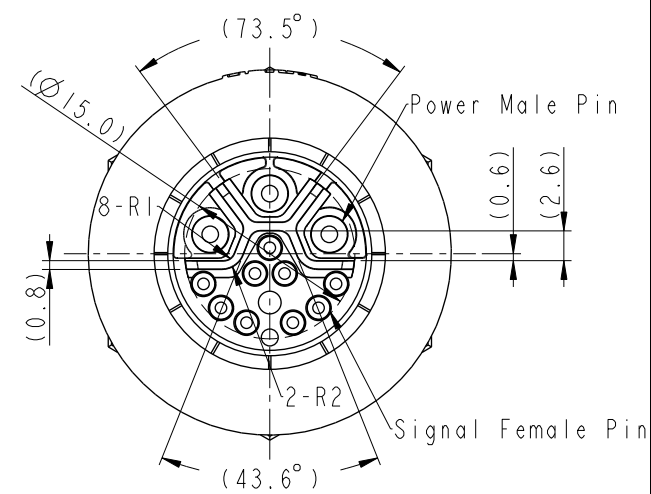
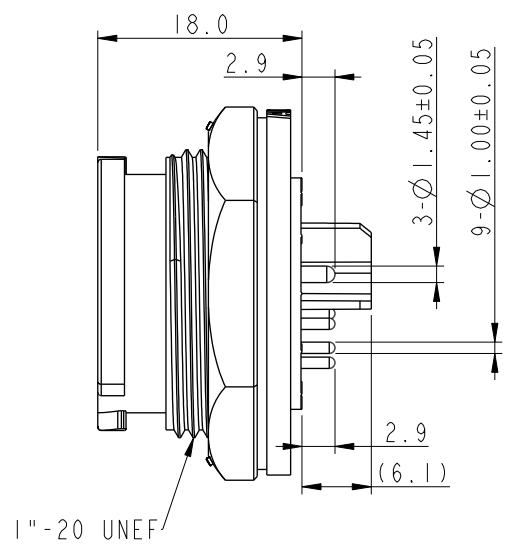


THIS DOCUMENT IS SUBJECT TO CHANGE WITHOUT NOTICE. IT IS CONFIDENTIAL AND A PROPERTY OF Amphenol LTW. DISCLOSURE TO THIRD PARTY HAS TO BE AUTHORIZED BY Amphenol LTW.

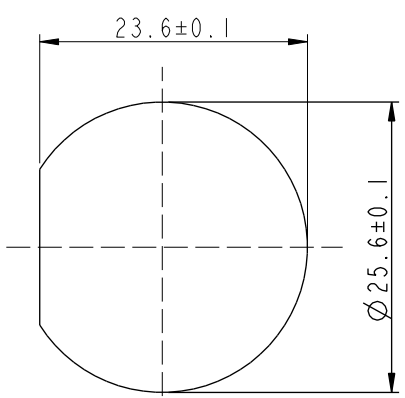
REV.	ECN NO.	DATE	SIGN	DESCRIPTION
A		2022/02/09	Na Liu	New Item
B	C220278	2022/02/23	Na Liu	△B X2
C	C230175	2023/02/13	Vicky	△C X2



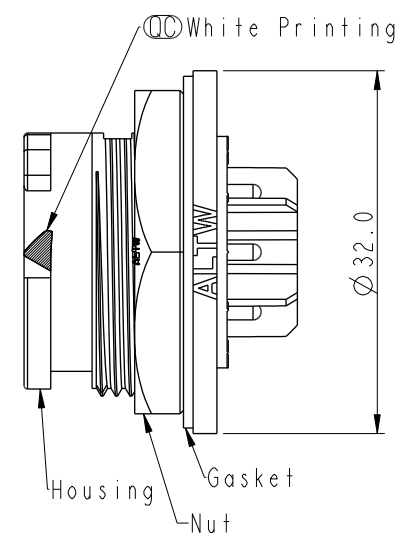
Recommended PCB Layout



Pin Assignments
Front View



Recommended Panel
Cut-Out



△B DCD-XXPMEP-QC8001
XX: No. Of Pin

- Note:
- * (CC) Important Dimension To Check.
 - * △C Waterprooff Rate: IP68(1M/24Hours).
 - * Connector
 - Housing: Thermoplastic, Black.
 - Signal Female Pin: Copper Alloy, Gold Plated.
 - Power Male Pin: Copper Alloy, Nickel Plated.
 - * Nut: Thermoplastic, Black.
 - * Gasket: Rubber, Gray.
 - * Use without waterproof cap
Panel Thickness Max: 3.6mm
 - * Use with waterproof cap
Panel Thickness Max: 2.6mm
 - * The recommended PCB thickness is 1.6-2.0mm
 - * Gasket & Nut are packed separately in PE bags

UNIT:mm		TITLE	XLOK, D-20A+5A, FRONT FASTENED M, M PWR+F SIG(H), PCB S, PUSH LOCK		
TOLERANCE		SCALE	SIZE	SHEET	OF
.X ±0.25		1:1	A4	1	1
.XX ±0.1		REV.	WC-REV.		
.XXX ±0.05		C	A.1		
ANGLES ±1°		QC: Inspection item			

Amphenol LTW
安費諾亮泰企業股份有限公司

ITEM NO	DRAWN BY	DATE
	Na Liu	2022-02-09
DWG NO	CHECKED BY	DATE
DCD-XXPMEP-QC8001	Fisher Wang	2022-02-09
CUSTOMER	APPROVED BY	DATE
ALTW	Max Yang	2022-02-09