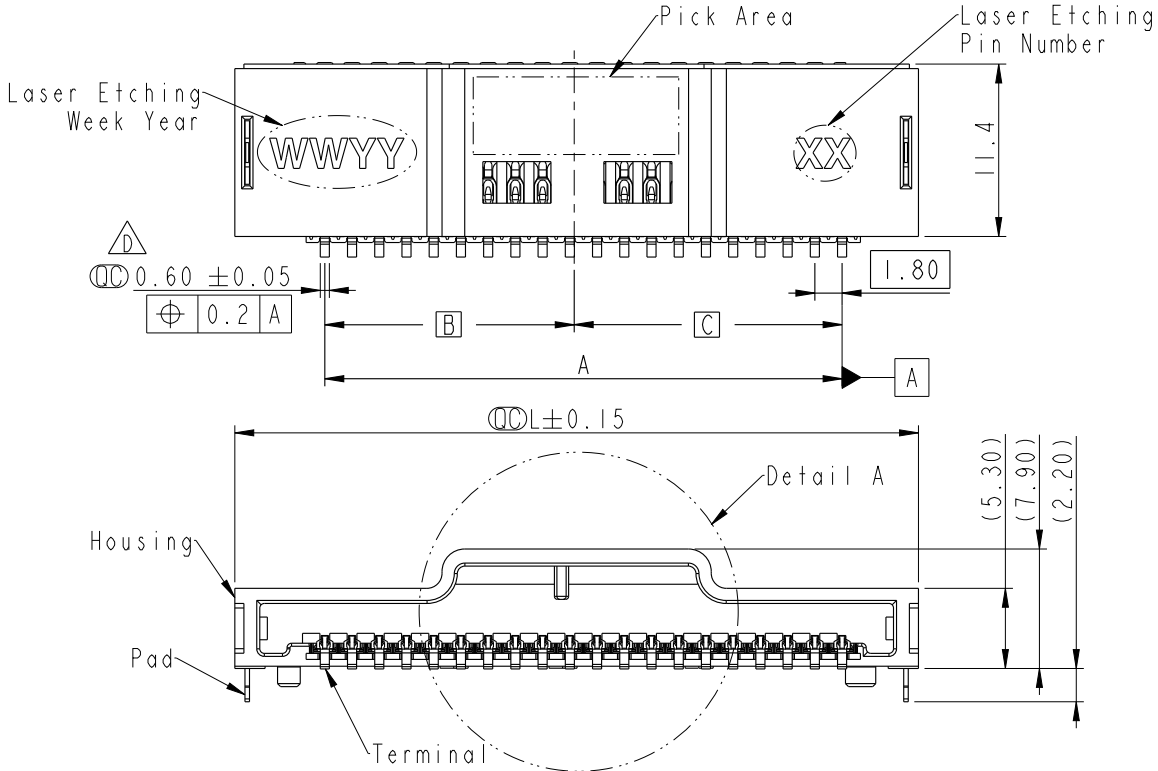


THIS DOCUMENT IS SUBJECT TO CHANGE WITHOUT NOTICE. IT IS CONFIDENTIAL AND A PROPERTY OF Amphenol LTW. DISCLOSURE TO THIRD PARTY HAS TO BE AUTHORIZED BY Amphenol LTW.

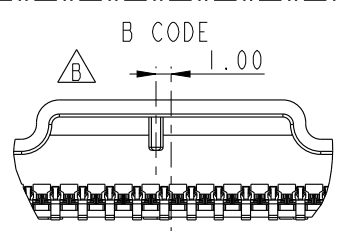
REV.	ECN NO.	DATE	SIGN	DESCRIPTION
B	C220320	2022/03/02	Xiaofeng	XI
C	C221934	2022/12/12	Ruru	XI
D	C250200	2025/03/19	Xiaofeng	XI



ZCONNECT SIZE				
PIN	L(mm)	A(mm)	B(mm)	C(mm)
11	29.0	18.0	9.45	8.55
12	30.8	19.8	9.45	10.35
13	32.6	21.6	11.25	10.35
14	34.4	23.4	11.25	12.15
15	36.2	25.2	13.05	12.15
16	38.0	27.0	13.05	13.95
17	39.8	28.8	14.85	13.95
18	41.6	30.6	14.85	15.75
19	43.4	32.4	16.65	15.75
20	45.2	34.2	16.65	17.55

Note:

- \* Important Dimensions To Check.
- \* Housing: Thermoplastic·Black.
- \* Terminal: Copper Alloy·Gold Plated.
- \* Pad: Metal.
- \* Hot plugging is not applicable for this part, please consult with manufacturer if special requirement is needed.



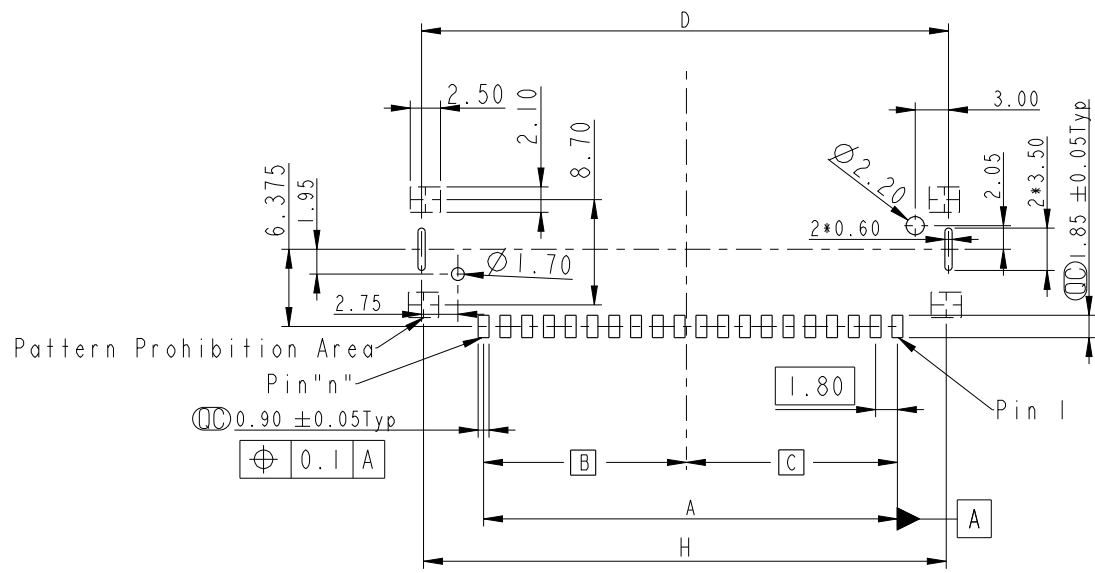
ZB-XX BFRS-BA0001  
 XX-Number of Contacts

UNIT:mm			TITLE Z CONN., N SHLD, B, P 1.8, F SMD
TOLERANCE	.X ±0.25		SCALE 1:1
	.XX ±0.1		SIZE A4
	.XXX ±0.05		SHEET 1 OF 4
ANGLES	±1°		REV. D
			WC-REV. .0
			Inspection item

**Amphenol LTW**  
 安費諾亮泰企業股份有限公司

ITEM NO	DRAWN BY Xiaofeng	DATE 2025/03/19
DWG NO ZB-XXBFRS-BA0001	CHECKED BY Jerry	DATE 2025/03/19
CUSTOMER ALTW	APPROVED BY Fred	DATE 2025/03/19

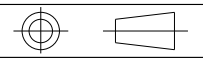
THIS DOCUMENT IS SUBJECT TO CHANGE WITHOUT NOTICE. IT IS CONFIDENTIAL AND A PROPERTY OF AMPHENOL LTW. DISCLOSURE TO THIRD PARTY HAS TO BE AUTHORIZED BY AMPHENOL LTW.



RECOMMENDED PCB LAYOUT

PCB LAYOUT SIZE					
PIN	A(mm)	B(mm)	C(mm)	D(mm)	H(mm)
11	18.0	9.45	8.55	27.35	27.0
12	19.8	9.45	10.35	29.15	28.8
13	21.6	11.25	10.35	30.95	30.6
14	23.4	11.25	12.15	32.75	32.4
15	25.2	13.05	12.15	34.55	34.2
16	27.0	13.05	13.95	36.35	36.0
17	28.8	14.85	13.95	38.15	37.8
18	30.6	14.85	15.75	39.95	39.6
19	32.4	16.65	15.75	41.75	41.4
20	34.2	16.65	17.55	43.55	43.2

UNIT: mm



TITLE: Z CONN., N SHLD, B, P 1.8, F SMD

SCALE: 1:1    SIZE: A4    SHEET: 2 OF 4

REV. D    WC-REV. .0    (CC): Inspection item

**Amphenol LTW**  
安費諾亮泰企業股份有限公司

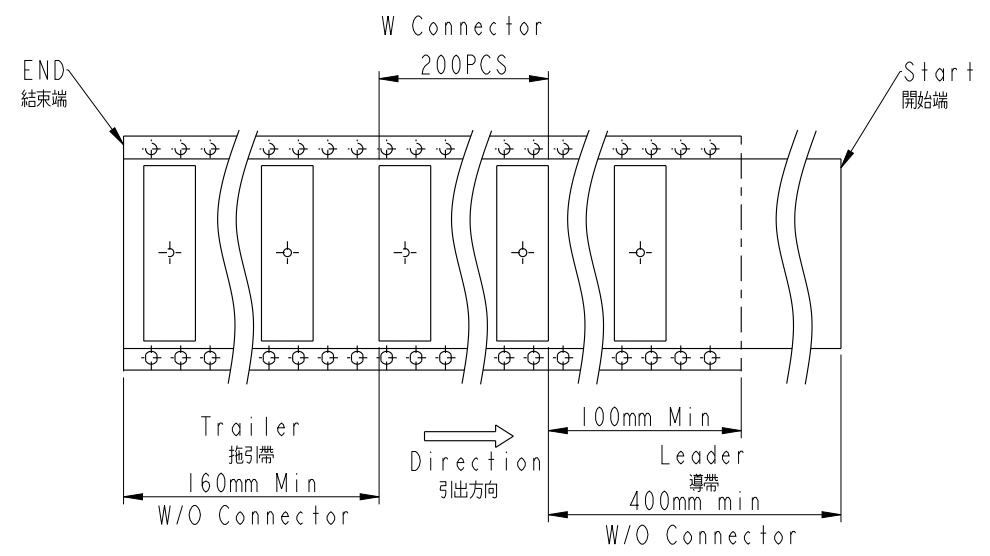
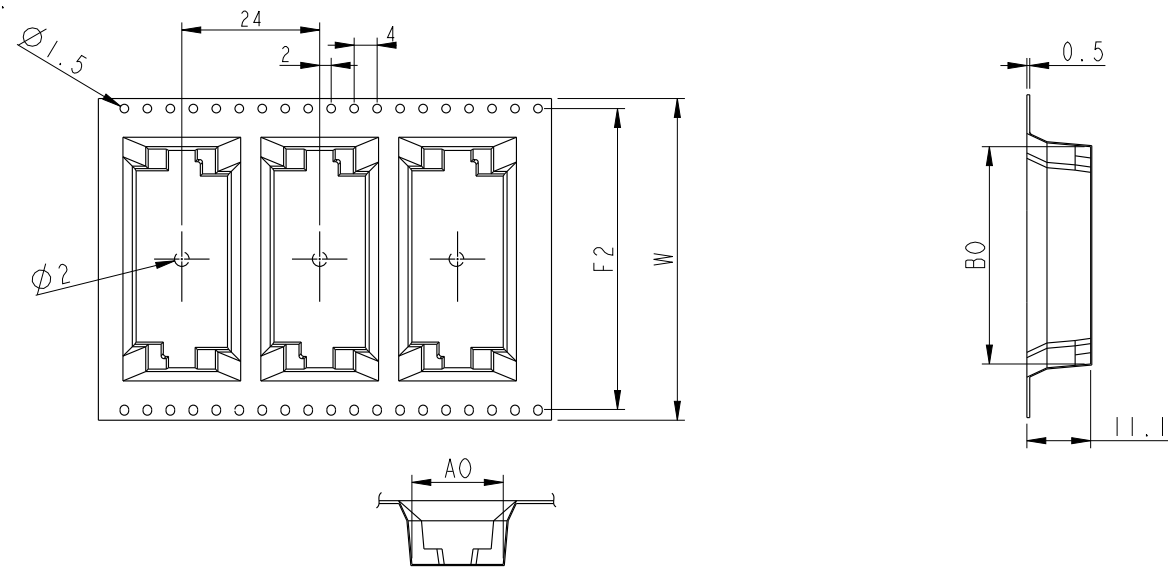
ITEM NO.    DWG NO. ZB-XXBFRS-BA0001    CUSTOMER: ALTW

DRAWN BY: Xiaofeng    CHECKED BY: Jerry    APPROVED BY: Fred

DATE: 2025/03/19    DATE: 2025/03/19    DATE: 2025/03/19

THIS DOCUMENT IS SUBJECT TO CHANGE WITHOUT NOTICE. IT IS CONFIDENTIAL AND A PROPERTY OF Amphenol LTW. DISCLOSURE TO THIRD PARTY HAS TO BE AUTHORIZED BY Amphenol LTW.

Packing:



PIN	B0(mm)	W(mm)	F2(mm)	A0(mm)
11	29.3	44	40.4	15.9
12	31.1	56	52.4	
13	32.9			
14	34.7			
15	36.5			
16	38.3			
17	40.1			72
18	41.9			
19	43.7			
20	45.5			

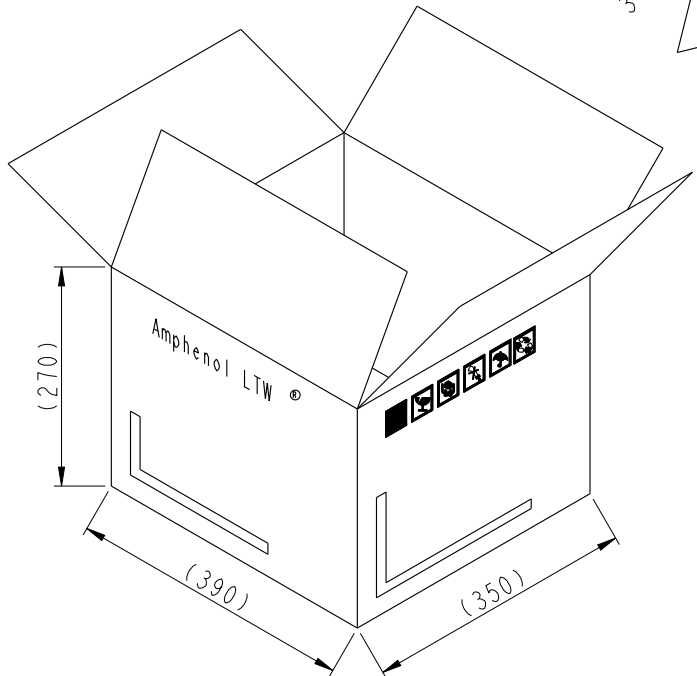
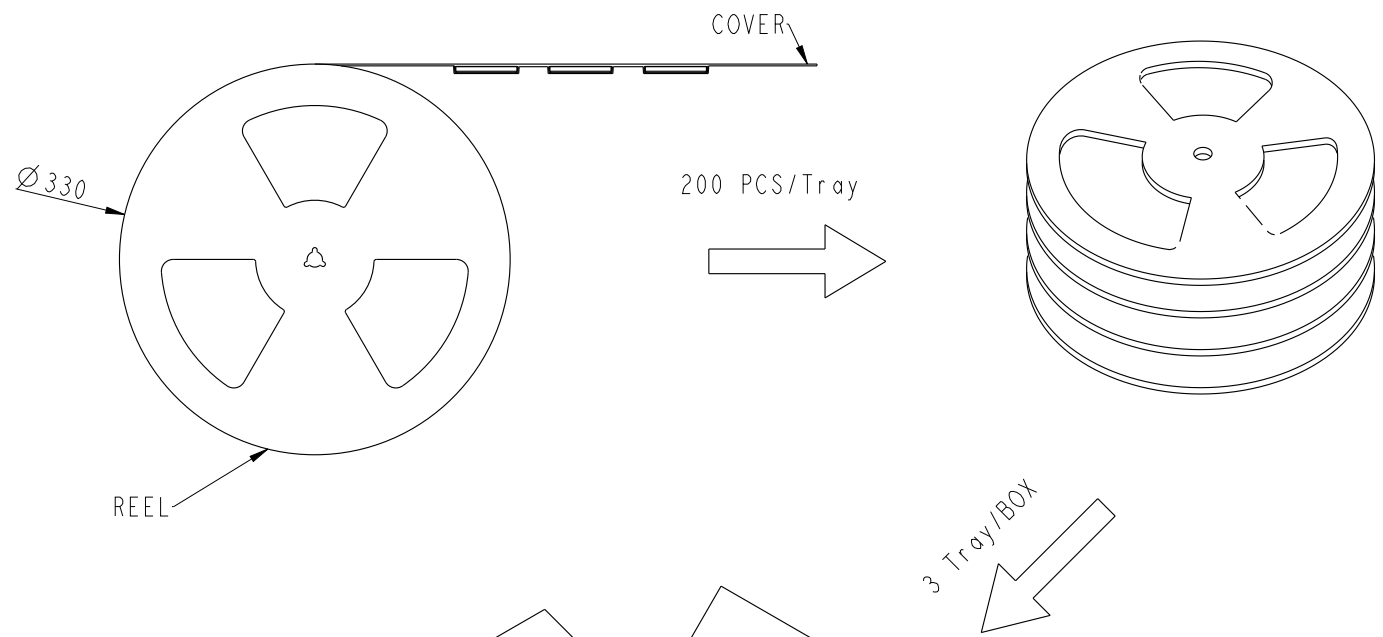
UNIT: mm		
TOLERANCE	.X $\pm 0.25$	.XX $\pm 0.1$
	.XXX $\pm 0.05$	ANGLES $\pm 1^\circ$

TITLE Z CONN., N SHLD, B, P 1.8, F SMD			
SCALE 1:1	SIZE A4	SHEET 3 OF 4	
REV. D	WC-REV. .0		Inspection item

**Amphenol LTW**  
安費諾亮泰企業股份有限公司

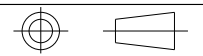
ITEM NO	DRAWN BY Xiaofeng	DATE 2025/03/19
DWG NO ZB-XXBFRS-BA0001	CHECKED BY Jerry	DATE 2025/03/19
CUSTOMER ALTW	APPROVED BY Fred	DATE 2025/03/19

THIS DOCUMENT IS SUBJECT TO CHANGE WITHOUT NOTICE. IT IS CONFIDENTIAL AND A PROPERTY OF Amphenol LTW. DISCLOSURE TO THIRD PARTY HAS TO BE AUTHORIZED BY Amphenol LTW.



Note:  
 \*  $\varnothing$  Important Dimensions.  
 \* MATERIAL: BLACK CONDUCTIVE POLYSTYRENE ALLOY(UP-6100).

UNIT:mm



TITLE Z CONN., N SHLD, B, P 1.8, F SMD

**Amphenol LTW**

ITEM NO

DRAWN BY Xiaofeng

DATE 2025/03/19

DWG NO ZB-XXBFRS-BA0001

CHECKED BY Jerry

DATE 2025/03/19

CUSTOMER ALTW

APPROVED BY Fred

DATE 2025/03/19

TOLERANCE  
 .X ±0.25  
 .XX ±0.1  
 .XXX ±0.05  
 ANGLES ±1°

SCALE 1:1 SIZE A4 SHEET 4 OF 4

安費諾亮泰企業股份有限公司

REV. D WC-REV. .0  $\varnothing$  Inspection item